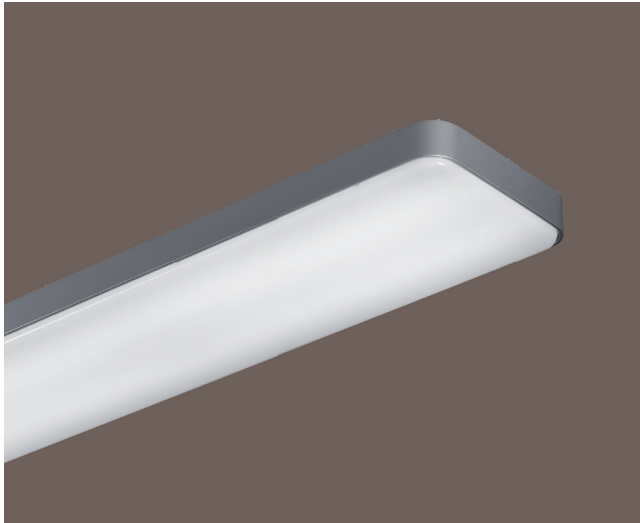


LED TEC DESIGN LIGHT, RECHTECKIG



Extras

Art.-Nr. Art. no.	EAN EAN	Beschreibung description
011001	4 250 849 101 449	Seilaufhängung/suspension set

Produkt

LED Tec Design Light

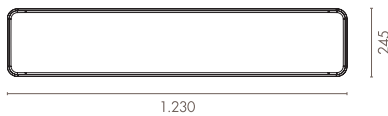
Leuchtenform	Rechteckig
Lichfarbe	3.000 K/4.000 K
Farbwiedergabe	≥80
Lebensdauer	30.000 h
Garantie	3 Jahre
Schutzklasse	IP20
Details	Eingangsspannung AC100 - 240V ~ 50/60 Hz

Product

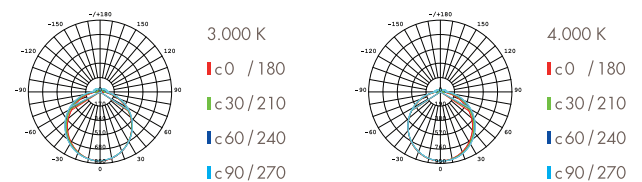
LED Tec Design Light

Shape	Rectangle
CCT	3.000 K/4.000 K
CRI	≥80
Lifetime	30.000 h
Warranty	3 years
Protection class	IP20
Details	Input voltage AC100 - 240V ~ 50/60 Hz

Maße / Dimensions (mm)



Lichtverteilungskurve / Light distribution curve



Spezifikationen / Specifications

Art.-Nr. Art. no.	EAN EAN	Maße dimensions (mm)	Leistung power (Watt)	Lichtstrom luminous flux. (Lumen)	Lichtfarbe CCT (Kelvin)	Abstr. Winkel beam angle (Grad/degree)	Dimmbar dimnable
181030	4 250 849 100 447	1.230 x 245 x 96	40	2.700	3.000	120°	X
181005	4 250 849 101 109	1.230 x 245 x 96	40	3.000	4.000	120°	X