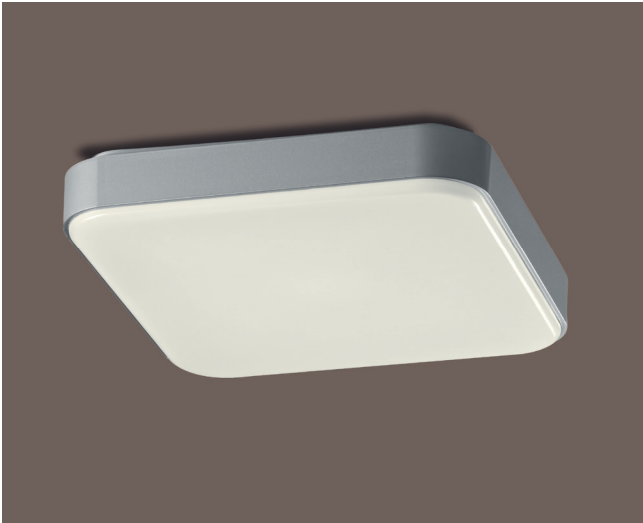


LED TEC DESIGN LIGHT, QUADRATISCH



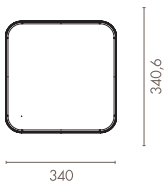
Produkt

LED Tec Design Light	
Leuchtenform	Quadratisch
Lichtfarbe	3.000 K/4.000 K
Farbwiedergabe	≥80
Lebensdauer	30.000 h
Garantie	3 Jahre
Schutzklasse	IP20
Details	Eingangsspannung AC100 - 240V ~ 50/60 Hz

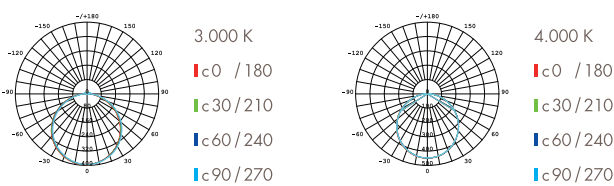
Product

LED Tec Design Light	
Shape	Square
CCT	3.000 K/4.000 K
CRI	≥80
Lifetime	30.000 h
Warranty	3 years
Protection class	IP20
Details	Input voltage AC100 - 240V ~ 50/60 Hz

Maße / Dimensions (mm)



Lichtverteilungskurve / Light distribution curve



Spezifikationen / Specifications

Art.-Nr. Art. no.	EAN EAN	Maße dimensions (mm)	Leistung power (Watt)	Lichtstrom luminous flux. (Lumen)	Lichtfarbe CCT (Kelvin)	Abstr. Winkel beam angle (Grad/degree)	Dimmbar dimmmable
181028	4 250 849 100 423	340,6 x 340,6 x 91	22	1.350	3.000	120°	X
181003	4 250 849 101 086	340,6 x 340,6 x 91	22	1.500	4.000	120°	X